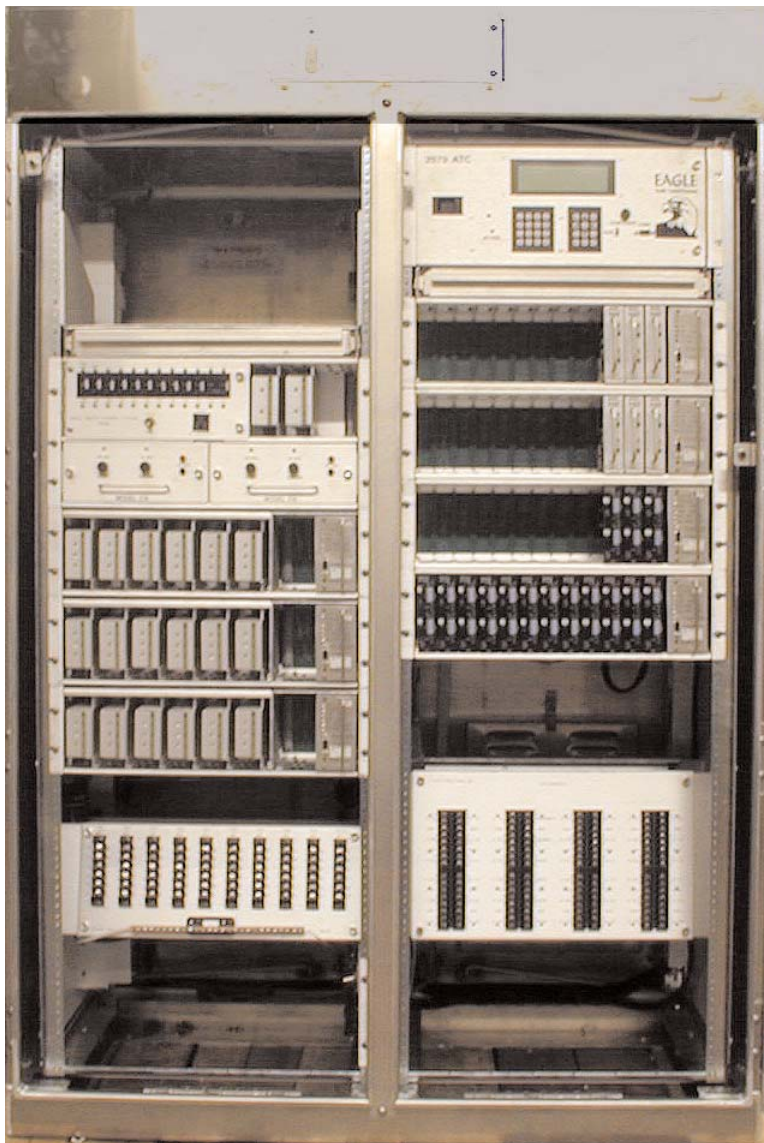


The EAGLE ITS Cabinet uses advanced technology and modularity to provide state-of-the-art transportation control as well as general-purpose functionality. The ITS goal is component standardization for interchangeability.



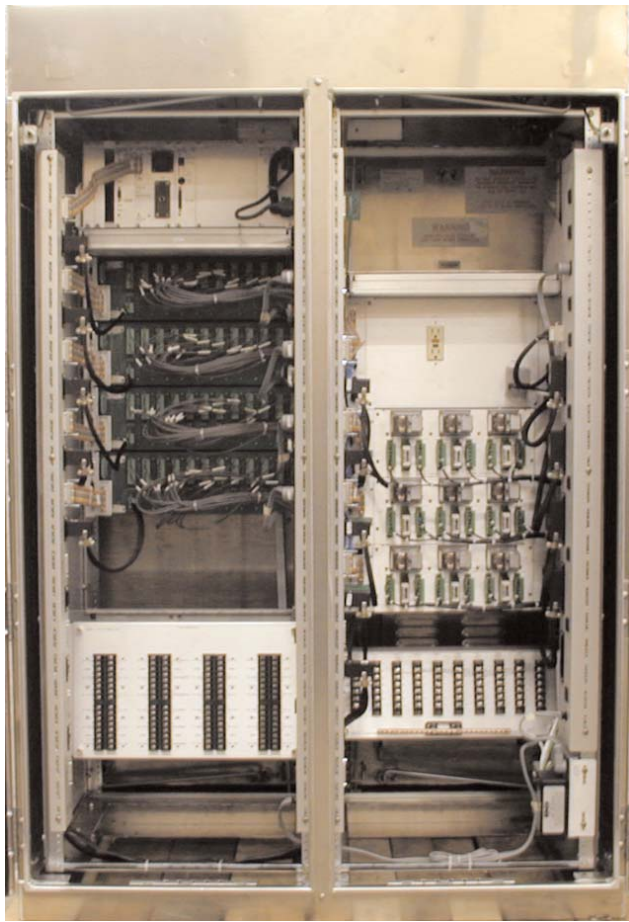
Shown with 2070 ATC

Features

- Ease of maintenance
- Modular:
 - Power Buses
 - Power Distribution Assembly (PDA)
 - Input Assemblies (60 two-channel Input slots)
 - Output Assemblies (28 Switch Pack slots)
 - MMU-16E Monitor Units (not shown)
 - 12V DC Power Supply
 - 24V DC Power Supply
- Serialized communication wires
- Internal wiring
- Includes new features like:
 - SIU
 - Battery Back-up
- Components interchangeable between vendors

Ideal for use with the 2070 ATC Controller and the 2070-1B CPU Card (with built in Ethernet connection).

Meets the CALTRANS TEES and the Joint NEMA / AASHTO / ITE Specifications for ITS Cabinets.

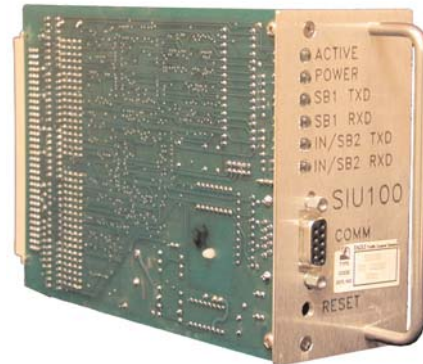


Back view of Model 340 ITS Cabinet

Functionality

19 different general-purpose instrumentations using combination of PDA, Communication Hub, Input, Output, Monitor, and Control Assemblies, including:

- Traffic & Ramp Metering
- Camera & Surveillance
- Irrigation
- VMS/DMS
- Lane Use
- Rail/Highway
- Speed Monitoring
- Incident Detection
- RWIS
- HAR
- HOV



SIU Card

- 54 available I/O's
- Controls up to fourteen (14) Switch Packs per SIU
- Serial connect at 614K baud rate

Cabinet Enclosure

Available in three (3) models -

- Model 342 (66.78" h x 24.25" w x 30.25" d)
- Model 354 (46.25" h x 24.25" w x 22.00" d)
- **Model 340 (4 door - 66.38" h x 44.50" w x 26.00" d)**

Fabricated from 0.125" thick aluminum, alloy 5052-H32.

- Optional Finishes: Natural, Painted, & Anodized
- ¾" diameter stainless steel door handles
- 3-point locking mechanism with duplex nylon rollers
- Removable rack assembly
- Optional fluorescent lamp(s)
- Optional lower Input Termination Panel



CMU Module